



# THE WORLD'S BEST MOUSETRAP

The design and performance of the Ketch-All® has earned it the title of "The World's Best Mousetrap."

The Ketch-All® operates without the use of harmful chemicals, making it safe to use around children and pets. It is efficient, often capturing several mice in one setting!

The Ketch-All® has been winning the war against rodents since 1924. It works 24 hours a day, every day of the year. By following the simple operating procedures, your Ketch-All® will provide years of proven, practical performance.

**Drowning Attachment** - Provides an easy way to dispose of mice, eliminates odors and helps keep the Ketch-All® clean.

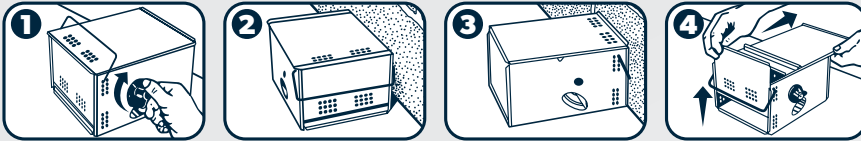


# SIMPLE TO ✓ SET ✓ CLEAN ✓ REUSE



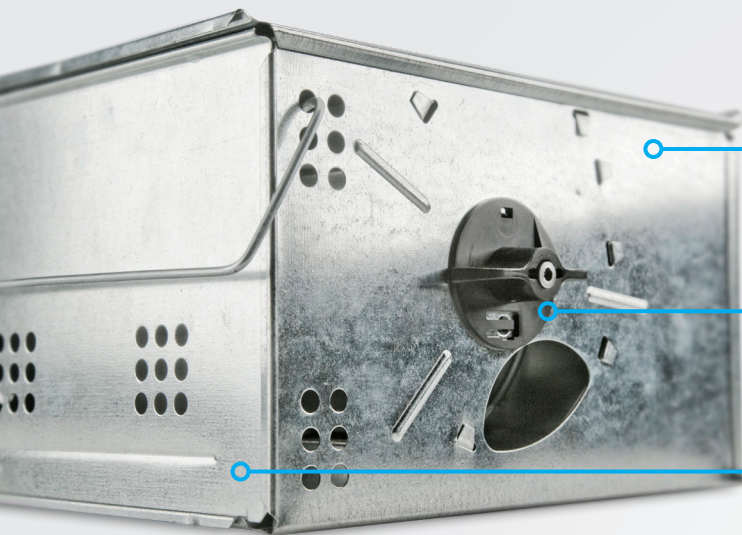
## Ketch-All® MULTIPLE CATCH MOUSETRAP : INSTRUCTIONS

Place the Ketch-All® 1½" to 2" from and parallel to the wall, with either entrance hole facing the wall. The trap may also be placed with either end flush to the wall. The Ketch-All® uses a mouse's own curiosity as bait. Once the mouse enters either side of the tunnel opening, the hair trigger activates the paddle wheel and the mouse is "spanked" into the cage compartment. Trapped mice attract other mice to the trap! Soon, the whole family of mice will be trapped with no bait, no mess and no poisonous chemicals.



**TO EMPTY:** Simply slide back the top lid and pull up the end plate.

**TO REUSE:** After 10 to 12 catches, simply rewind the trap four to six full (360°) turns.



### ✓ Multiple Catch

- Trap will continue to catch mice as long as it is properly wound.
- Trapped mice attract other mice to the trap.

### ✓ Unique Design

- No harmful chemicals, baits or poisons. Safe for user and the environment.
- Appeals to mouse's harborage instincts.
- No possible contamination of products in production areas.

### ✓ Sure-Set

- For a properly wound trap, simply wind the knob on the trap until it stops.
- Trap equalizes sensitivity for trapping mice of all sizes.
- No need to unwind and reset traps.

### ✓ Removable End Plate and Lid

- Easy to clean for greater sanitation.

### ✓ Time Tested Since 1924

- All Ketch-All® traps are backed by a one-year limited warranty for parts and labor when used as directed.

**PRO GRADE  
 PERFORMANCE**

Quality construction. Made from durable galvanized steel for years of use.



**Clear View Lid -**  
 Easy to monitor to reduce inspection time.

ALSO AVAILABLE FROM KNESS

## Ketch-All® GLUE TRAP

The Ketch-All® Glue Trap allows easier, faster, more sanitary pest removal.

View all our products online at [kness.com/products](http://kness.com/products)



### KETCH-ALL® INNER-PACKED

DESCRIPTION	STOCK #	QUANTITY	CARTON SIZE	WEIGHT
Ketch-All® Metal Lid	101-0-003	6	17" x 11" x 19"	20 lbs.
Ketch-All® Metal Lid	101-0-006	12	19" x 17" x 21"	40 lbs.
Ketch-All® Clear View Lid	101-0-023	6	17" x 11" x 19"	20 lbs.
Ketch-All® Clear View Lid	101-0-026	12	19" x 17" x 21"	40 lbs.

### TIME SAVING KETCH-ALL® ACCESSORIES

DESCRIPTION	STOCK #	QUANTITY	CARTON SIZE	WEIGHT
Glue Trap	101-0-035	100 Traps	8½" x 4½" x 5¾"	3 lbs.
Drowning Attachment	101-0-016	1	8" x 3½" x 3½"	0.8 lbs.