



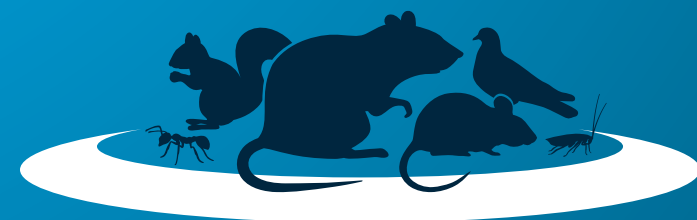
*Your best defense.™*

# **kness**

Pest Defense



*Your best defense.™*

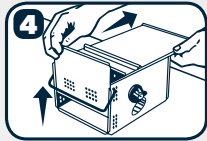
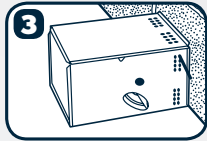
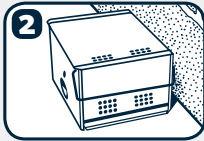
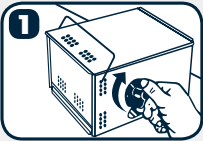


*Featuring a Full Line of Pest Control Products*



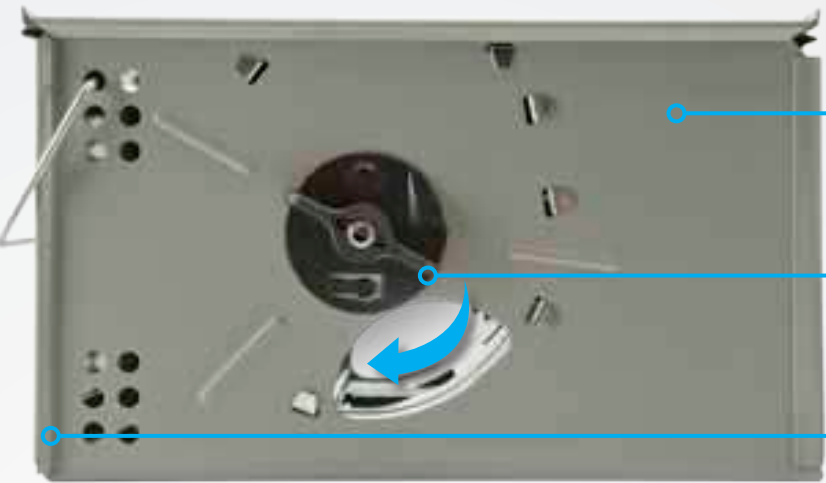
**Ketch-All®** MULTIPLE CATCH MOUSETRAP : INSTRUCTIONS

Place the Ketch-All® 1½" to 2" from and parallel to the wall, with either entrance hole facing the wall. The trap may also be placed with either end flush to the wall. The Ketch-All® uses a mouse's own curiosity as bait. Once the mouse enters either side of the tunnel opening, the hair trigger activates the paddle wheel and the mouse is "spanked" into the cage compartment. Trapped mice attract other mice to the trap! Soon, the whole family of mice will be trapped with no bait, no mess and no poisonous chemicals.



**TO EMPTY:** Simply slide back the top lid and pull up the end plate.

**TO REUSE:** After 10 to 12 catches, simply rewind the trap four to six full (360°) turns.



**✓ Multiple Catch**

- Trap will continue to catch mice as long as it is properly wound.
- Trapped mice attract other mice to the trap.

**✓ Unique Design**

- No harmful chemicals, baits or poisons. Safe for user and the environment.
- Appeals to mouse's harborage instincts.
- No possible contamination of products in production areas.

**✓ Sure-Set**

- For a properly wound trap, simply wind the knob on the trap until it stops.
- Trap equalizes sensitivity for trapping mice of all sizes.
- No need to unwind and reset traps.

**✓ Removable End Plate and Lid**

- Easy to clean for greater sanitation.

**✓ Time Tested Since 1924**

- All Ketch-All® traps are backed by a one-year limited warranty for parts and labor when used as directed.

**PRO GRADE PERFORMANCE**

Quality construction. Made from durable galvanized steel for years of use.



**Protector** - The protector is a heavy steel guard that protects the trap from crushing by machinery, forklifts or foot traffic.



**Clear View Lid** - Easy to monitor to reduce inspection time.

**ALSO AVAILABLE FROM KNESS**  
**Ketch-All®**  
GLUE TRAP

The Ketch-All® Glue Trap allows easier, faster, more sanitary pest removal.

View all our products online at [kness.com/products](http://kness.com/products)



## THE WORLD'S BEST MOUSETRAP

The design and performance of the Ketch-All® has earned it the title of "The World's Best Mousetrap."

The Ketch-All® operates without the use of harmful chemicals, making it safe to use around children and pets. It is efficient, often capturing several mice in one setting!

The Ketch-All® has been winning the war against rodents since 1924. It works 24 hours a day, every day of the year. By following the simple operating procedures, your Ketch-All® will provide years of proven, practical performance.



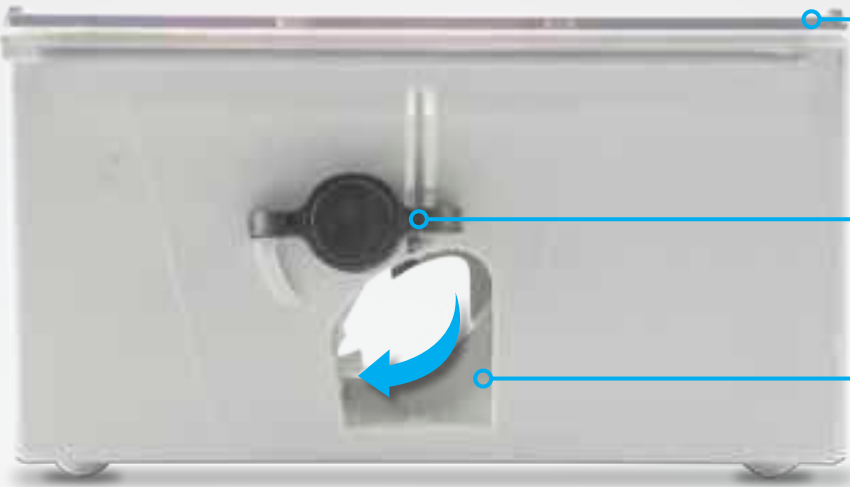
**Drowning Attachment** - Provides an easy way to dispose of mice, eliminates odors and helps keep the Ketch-All® clean.





**Mini-Mouser®** MULTIPLE CATCH MOUSETRAP : INSTRUCTIONS

Place the Mini-Mouser® 1½" to 2" from and parallel to the wall, with either entrance hole facing the wall. The trap may also be placed with either end flush to the wall. The Mini-Mouser® uses a mouse's own curiosity as bait. Once it enters either side of the tunnel opening, the hair trigger activates the paddle wheel and the mouse is "spanked" into the cage compartment. Trapped mice attract other mice to the trap! Soon, the whole family of mice will be trapped with no bait, no mess and no poisonous chemicals.



- ✓ **Removable Lid**
  - Easy to clean for greater sanitation.
- ✓ **Multiple Catch**
  - Trap works 24 hours a day, every day of the year.
  - Trapped mice attract other mice to the trap.
- ✓ **Sure-set**
  - For a properly wound trap, simply wind the knob on the trap until it stops.
  - Equalizes trap sensitivity for trapping mice of all sizes.
  - No need to unwind and reset traps.
- ✓ **Unique Design**
  - No harmful chemicals, baits or poisons. Safe for user and the environment.
  - Appeals to mouse's harborage instincts. No possible contamination of products in production areas.



**PRO GRADE  
PERFORMANCE**

Our traps are made of durable polystyrene and steel. They resist stains and odors, are easy to clean and can be reused for years of rodent control. They are simple, safe, sanitary and built to last.

**ALSO AVAILABLE FROM KNESS**  
**Tip-Trap®**  
LIVE CAPTURE MOUSETRAP

The simple do-it-yourself mousetrap. Designed for residential and commercial use.

View all our products online at [kness.com/products](https://kness.com/products)



**SAME PERFECTION  
SMALLER PACKAGE**

The Mini-Mouser® has many great features. It operates without the use of harmful chemicals, just like the Ketch-All®, making it safe to use around children and pets. It is efficient, often capturing several mice in one setting. It's just mini!

**MINI-MOUSER® MULTIPLE CATCH MOUSETRAP BULK**

DESCRIPTION	STOCK #	QUANTITY	CARTON SIZE	WEIGHT
Mini-Mouser® Multiple Catch Mousetrap	105-0-002	6 pk.	13" x 9" x 11"	7 lbs.
Mini-Mouser® Multiple Catch Mousetrap	105-0-003	12 pk.	16" x 10" x 20"	14 lbs.

**MINI-MOUSER® MULTIPLE CATCH MOUSETRAP INNER-PACKED**

DESCRIPTION	STOCK #	QUANTITY	CARTON SIZE	WEIGHT
Mini-Mouser® Multiple Catch Mousetrap	105-0-012	6 pk.	13" x 9" x 11"	7 lbs.





## THE ALWAYS-SET ALL-IN-ONE MOUSETRAP

The Pro-Ketch® Multiple Catch Mousetrap is always properly set, giving you the peace of mind that comes from knowing you always have protection. The Pro-Ketch® low-profile trap reduces service time, which saves time and money.

When you need extra protection against heavy moisture or caustic chemicals, the Pro-Ketch® is the answer.

### Pro-Ketch® MULTIPLE CATCH MOUSETRAP : INSTRUCTIONS

Place trap flush with entrance holes next to wall near pest activity. Place optional glue trap inside the Pro-Ketch® for an additional scent lure. To release, simply open the top of the Pro-Ketch® over desired area and let mouse slide out. Wipe or brush trap to clean.



☒ **Clear View Lid**

- Easy to monitor.
- Reduces inspection time.

☒ **Durable Galvanized Steel**

- Quality construction.
- Years of dependable service.

☒ **Monitors Insect and Rodent Activity**

- Multipurpose usage.
- Identifies problem areas.

☒ **No Winding or Resetting**

- Trap is always set, giving you peace of mind knowing you have protection.
- Fast placement. Worry free.

☒ **All-In-One Hinged Lid**

- Easier to clean for maximum sanitation.
- Entrance tunnels are out of the way and off the floor of the trap.
- Reduces service time.

☒ **Unique Design**

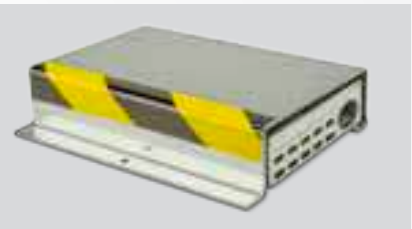
- No harmful chemicals, baits or poisons.
- Safe for user and the environment.
- May be used in USDA and FDA inspected facilities.

**PRO GRADE  
PERFORMANCE**

Pro-Ketch® parts go through a six-stage washer, degreaser, rinse and phosphatizing system for superior paint adhesion. The powdered paint is applied with an electrostatic spray system that gives an even coat of paint.



**Clear View Lid** - Easy to monitor to reduce inspection time.



**Protector** - The protector is a heavy steel guard that protects the trap from crushing by machinery, forklifts or foot traffic.

**ALSO AVAILABLE FROM KNESS**  
**Ants-No-More®**  
ANT BAIT STATION

The Ants-No-More® Ant Bait Station is placed outdoors by simply sticking it in the ground, or indoors by inserting it into the soil of a planter.

View all our products online at [kness.com/products](http://kness.com/products)



**PRO-KETCH® WITH UPC**

DESCRIPTION	STOCK #	QUANTITY	CARTON SIZE	WEIGHT
Pro-Ketch® Metal Lid	104-0-003	12	13" x 12" x 11"	17 lbs.
Pro-Ketch® Clear Lid	104-0-004	12	13" x 12" x 11"	16 lbs.
Pro-Ketch® Glue Trap	104-0-009	100	11" x 8" x 6"	7 lbs.

**PRO-KETCH® BULK**

DESCRIPTION	STOCK #	QUANTITY	CARTON SIZE	WEIGHT
Pro-Ketch® Metal Lid	104-0-057	12	13" x 12" x 11"	17 lbs.
Pro-Ketch® Clear Lid	104-0-058	12	13" x 12" x 11"	16 lbs.
Pro-Ketch® Painted	104-0-014	12	13" x 12" x 11"	18 lbs.

**TIME SAVING PRO-KETCH® ACCESSORIES**

DESCRIPTION	STOCK #	QUANTITY	CARTON SIZE	WEIGHT
Glue Trap	104-0-009	100 Traps	11" x 8" x 6"	7 lbs.
Service Label	106-0-016	100 Labels	6" x 13" x 1"	.28 lbs.
Protector	104-0-012	6 Per Case	12" x 11" x 9"	32 lbs.





**Pro-Ketch® Junior**  
MULTIPLE CATCH MOUSETRAP : INSTRUCTIONS

Place trap flush with entrance holes next to wall near pest activity. Place optional glue trap inside the Pro-Ketch® Junior for an additional scent lure. To release, simply open the top of the Pro-Ketch® Junior over desired area and let mouse slide out. Wipe or brush trap to clean.



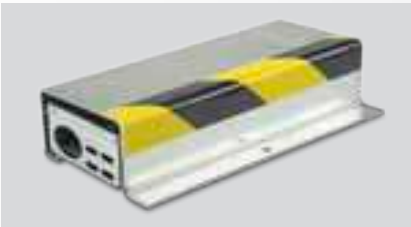
- ☒ **Monitors Insect and Rodent Activity**
  - Multipurpose usage.
  - Identifies problem areas.
- ☒ **No Winding or Resetting**
  - Trap is always set, giving you peace of mind knowing you have protection.
  - Fast placement. Worry free.
- ☒ **All-In-One Hinged Lid**
  - Easier to clean for maximum sanitation.
  - Entrance tunnels are out of the way and off the floor of the trap.
  - Reduces service time.
- ☒ **Unique Design**
  - No harmful chemicals, baits or poisons.
  - Safe for user and the environment.
  - May be used in USDA and FDA inspected facilities.
  - Junior is half the size of the original Pro-Ketch® allowing for more placement options.

- ☒ **Clear View Lid**
  - Easy to monitor.
  - Reduces inspection time.
- ☒ **Durable Galvanized Steel**
  - Quality construction.
  - Years of dependable service.

**PRO GRADE PERFORMANCE** Pro-Ketch® Junior parts go through a six-stage washer, degreaser, rinse and phosphatizing system for superior paint adhesion. The powdered paint is applied with an electrostatic spray system that gives an even coat of paint.



**Glue Trap** - Custom fit and pre-baited to attract multiple mice and insects.



**Protector** - The protector is a heavy steel guard that protects the trap from crushing by machinery, forklifts or foot traffic.

**ALSO AVAILABLE FROM KNESS**  
**Pro-Ketch®**  
MULTIPLE CATCH MOUSETRAP

Always properly set, giving you the peace of mind that comes from knowing you always have protection.

View all our products online at [kness.com/products](http://kness.com/products)



DESCRIPTION	STOCK #	QUANTITY	CARTON SIZE	WEIGHT
Pro-Ketch® Junior with Solid Front with UPC	104-0-038	12	8" x 12" x 11"	13 lbs.
Pro-Ketch® Junior with Easy View Window with UPC	104-0-036	12	8" x 12" x 11"	13 lbs.
Pro-Ketch® Junior Glue Trap	104-0-039	216	10¼" x 6¼" x 5½"	5 lbs.
Pro-Ketch® Junior Protector	104-0-041	6	12" x 8" x 9"	25 lbs.
Pro-Ketch® Junior with Solid Front Bulk	104-0-059	12	8" x 12" x 11"	12 lbs.
Pro-Ketch® Junior with Easy View Window Bulk	104-0-060	12	8" x 12" x 11"	12 lbs.

**SAME PERFECTION  
NEW PERSPECTIVE**

Just as with the Pro-Ketch® Multiple Catch Mousetrap, Junior is always properly set, giving you peace of mind. The "tunnel-on-top" design of Pro-Ketch® and Pro-Ketch® Junior allows for faster and easier cleaning, which saves you time and money.

The Junior has something new to offer: the easy-view side window! The same perfection found in Pro-Ketch® with a new perspective only found with Pro-Ketch® Junior.



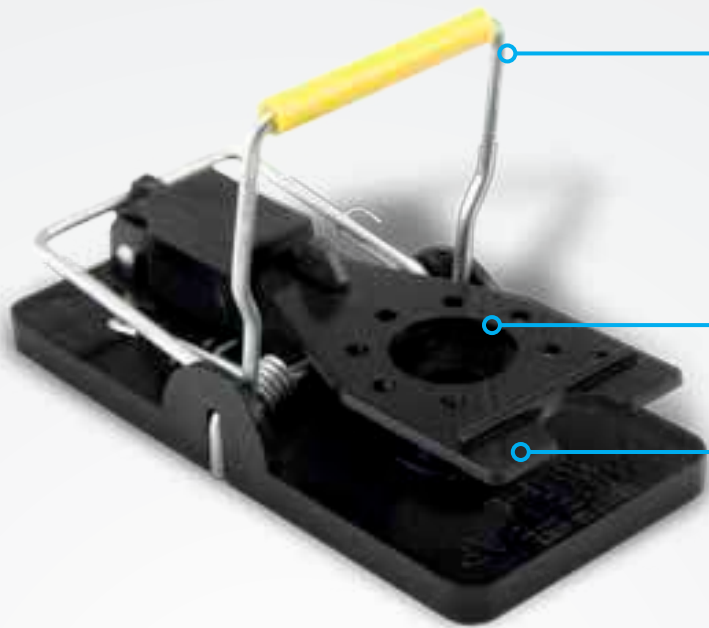


**Snap-E®** MOUSETRAP : INSTRUCTIONS

Place the baited Snap-E® near a wall and pull back on the upright bar until it locks firmly in the catch. The vertical strike bar is faster than the bar in an old-fashioned wooden trap because it travels just half the distance to catch a mouse. The large trip paddle and strike bar catch rodents from the front, sides and back. To clear the trap, simply pull back on the upright bar until mouse is released. Your fingers never touch the mouse.



- 1 Simply place bait in pre-formed bait cup.
- 2 Pull back slowly on upright bar until locked firmly in catch. Place trap next to wall near pest activity.
- 3 Pull back slightly on upright bar until mouse is released.



- ☒ **Vertical Strike Bar**
  - Travels just half the distance of old-fashioned wooden traps for a faster response time and a quick, clean catch.
  - Easy to set. Easy to release after use. Your fingers never touch the rodent.
- ☒ **The Snap-E® Fits in Most Bait Boxes**
  - Rodent and trap are kept out of sight.
  - Excellent for use in sensitive areas, such as schools and food plants.
- ☒ **Pre-formed Bait Cup**
  - Easy to bait. Confines bait to the trap in all environments.
  - Reduces bait stealing. Attracts rodent to ideal strike bar location.
- ☒ **Large Trip Paddle**
  - Reduces premature tripping. Ensures catch from front, sides and back.
  - Provides a sure catch.
- ☒ **Polystyrene and Steel Construction**
  - Durable. Easy to clean. Resists stains and odors.
  - Economical and reusable for years of service.

**ALSO AVAILABLE FROM KNESS**  
**Snap-E®** COVER

Snap-E® Covers keep traps and catch out of sight, keeping children and pets away from rodents and traps.

View all our products online at [kness.com/products](https://kness.com/products)



**PRO GRADE**  
**PERFORMANCE**

Our traps are built with durable polystyrene and steel for years of use. Snap-E® traps resist stains and odors, are easy to clean and provide simple, safe and sanitary rodent control.

*The Snap-E® is truly a*  
**BETTER MOUSETRAP**

Snap-E® mousetraps are escape proof and the innovative design ensures you'll never touch another mouse. The mechanism is smart, the materials are rugged. Snap-E® mousetraps are easy to use and made to last. Use them year after year. **They're safe, simple and sanitary.**

Steel and durable polystyrene materials make them tough. Smart engineering - including a larger trip paddle and strike bar - makes them work every time.



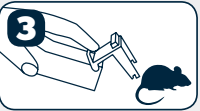
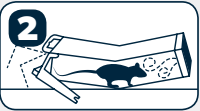
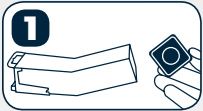




**Tip-Trap®** LIVE CAPTURE MOUSETRAP : INSTRUCTIONS


Put bait on the inside of the removable end cap. Place trap near a wall with trap door open. The smell of the bait will flow out the trap door to attract mice. When a mouse enters the Tip-Trap® it will cause the unit to tip, capturing the mouse inside.


To release, simply position Tip-Trap® over desired area, pull back on closed trap door and let mouse slide out.





- 1** Use peanut butter as bait (not included)
- 2** When mouse goes for bait, trap tips, and door closes.
- 3** Simple, no-touch disposal and release.



-  **Easy Release, Disposal**
- No need to touch rodent.
  - Neat, clean and sanitary. Worry free.

-  **Simple to Set**
- Quick, easy placement of trap.
  - No fingers caught in traps.

-  **Unique Design**
- No harmful chemicals, baits or poisons.
  - Safe to use around children and pets.
  - Resistant to stains and odor.
  - Reusable and easy to clean.

-  **Versatile Trap**
- Can be used everywhere.

# THE SIMPLE DO-IT-YOURSELF MOUSETRAP

The Tip-Trap® is designed for residential and commercial use. This unit is safe, simple and effective because it is easy to bait, easy to set, and easy to release.

**PRO GRADE  
PERFORMANCE**

Made of polypropylene. Resistant to stains and odors. Tip-Traps® are easy to clean and can be reused or disposed of after mouse is caught.

**ALSO AVAILABLE FROM KNESS**  
**Mini-Mouser®**  
MULTIPLE CATCH MOUSETRAP

Operating without the use of harmful chemicals, just like the Ketch-All®, the Mini-Mouser is safe to use around children and pets. It's just MINI!

View all our products online at [kness.com/products](https://kness.com/products)



DESCRIPTION	STOCK #	CARTON SIZE	QUANTITY	WEIGHT
Tip-Trap®	109-0-003	8½" x 11" x 7⅜"	4 of 6	4 lbs.
Tip-Trap®	109-0-004	16¼" x 16" x 7½"	12 of 6	10 lbs.
*Tip-Trap® Bulk	109-0-005	10¾" x 8½" x 7½"	24	3 lbs.
Tip-Trap® Bulk with UPC	109-0-006	11½" x 12½" x 10½"	60	7 lbs.
Tip-Trap® Bulk with UPC	109-0-007	18" x 21" x 16½"	270	31 lbs.

\*Professional Pest Control Sales Only





**Snap-E®** COVER : INSTRUCTIONS

To remove the cover top, insert the key into the slot beside the mouse entrance hole. (Figure 1&2). Hold the base down and pull straight up on the cover top to open. (Figure 3). Remove the key and keep in a safe place.



**EASY TO BAIT:** Place peanut butter in bait cup.

**EASY TO SET:** With trap on a flat surface, pull back slowly on upright bar until it locks firmly in catch. Trap is set when colored bar is in vertical position.

**EASY TO RELEASE MOUSE:** To dispose of mouse, simply pull back slightly on the upright bar until the mouse is released.

✓ **Key Required to Prevent Accidental Opening**

✓ **Blends into the Environment**

✓ **Catch and Trap are Out of Sight**

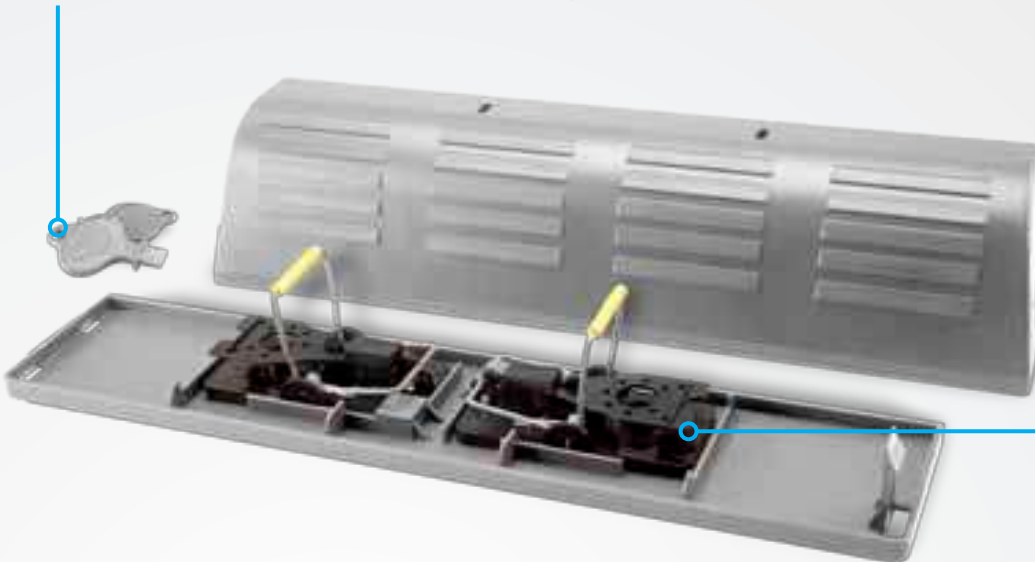
✓ **Keeps Children and Pets Away From Traps**

✓ **Use in Common Areas**

✓ **Inspection Holes**

✓ **No Chemicals**

✓ **Holds Wooden Snap Traps and Snap-E® Mousetraps**



**PRO GRADE  
PERFORMANCE**

Our Snap-E® Covers are constructed of durable plastic. They resist stains and odors, are easy to clean and can be reused for years of rodent control.

**ALSO AVAILABLE FROM KNESS**  
**Ketch-All®**  
MULTIPLE CATCH MOUSETRAP

The Ketch-All® needs no bait and catches multiple mice in one setting. The trap is properly set with four to six full (360°) turns.

View all our products online at [kness.com/products](http://kness.com/products)



# THE WORLD'S BEST MOUSETRAP COVER

Snap-E® Covers keep traps and catch out of sight and keep children and pets away from rodents and traps. Snap-E® Covers require no chemicals and are constructed with durable plastic.

Inspection holes on top of Snap-E® mousetrap covers allow fast checking of traps. Two safety keys are provided with each Snap-E® Cover.

Covers are available in four colors and are also paintable.

**SNAP-E® COVER INNER-PACKED (EACH COVER INCLUDES 2 SNAP-E® MOUSETRAPS)**

DESCRIPTION	STOCK #	CARTON SIZE	QUANTITY	WEIGHT
Snap-E® Mousetrap Cover, 6 pk. - White	102-0-055	10 <sup>5</sup> / <sub>8</sub> " x 7" x 15 <sup>5</sup> / <sub>8</sub> "	6	8 lbs.
Snap-E® Mousetrap Cover, 6 pk. - Black	102-0-057	10 <sup>5</sup> / <sub>8</sub> " x 7" x 15 <sup>5</sup> / <sub>8</sub> "	6	8 lbs.
Snap-E® Mousetrap Cover, 6 pk. - Gray	102-0-059	10 <sup>5</sup> / <sub>8</sub> " x 7" x 15 <sup>5</sup> / <sub>8</sub> "	6	8 lbs.
Snap-E® Mousetrap Cover, 6 pk. - Brown	102-0-061	10 <sup>5</sup> / <sub>8</sub> " x 7" x 15 <sup>5</sup> / <sub>8</sub> "	6	8 lbs.

**SNAP-E® COVER BULK (NO SNAP-E® MOUSETRAPS INCLUDED)**

DESCRIPTION	STOCK #	CARTON SIZE	QUANTITY	WEIGHT
*Snap-E® Mousetrap Cover, 6 pk. - White	102-0-062	10 <sup>5</sup> / <sub>8</sub> " x 7" x 15 <sup>5</sup> / <sub>8</sub> "	6	6 lbs.
*Snap-E® Mousetrap Cover, 6 pk. - Black	102-0-063	10 <sup>5</sup> / <sub>8</sub> " x 7" x 15 <sup>5</sup> / <sub>8</sub> "	6	6 lbs.
*Snap-E® Mousetrap Cover, 6 pk. - Gray	102-0-064	10 <sup>5</sup> / <sub>8</sub> " x 7" x 15 <sup>5</sup> / <sub>8</sub> "	6	6 lbs.
*Snap-E® Mousetrap Cover, 6 pk. - Brown	102-0-065	10 <sup>5</sup> / <sub>8</sub> " x 7" x 15 <sup>5</sup> / <sub>8</sub> "	6	6 lbs.
*Snap-E® Cover Glue Trap	102-0-066	11" x 6" x 4"	100	4 lbs.

\*Professional Pest Control Sales Only





**Stick-All®** MOUSE & INSECT TRAP : INSTRUCTIONS

The Stick-All® Glue Trap is easy to use. Remove the protective paper, slide back top cover and insert glue trap. Close lid and place near pest activity. Simply dispose of glue trap when full. No dangerous chemicals are used. The pre-baited glue trap can be placed in the home, office and warehouse. Convenient for the user and safe for the environment.

✓ **Multipurpose Protector and Glue Trap**

- Protects pre-baited glue trap from dust and debris. No moving parts. Pests remain out of sight when caught.
- Prolongs life of glue trap. Safe around children and pets. Attractive appearance for home, office and warehouse.

✓ **Unique Design**

- Attracts mice and insects. Diverting walls lead pests right to sticky surface. Holes for bullet pheromone lures attract various insects.
- Trapped pests remain out of sight. Easy and sanitary disposal of glue trap.

✓ **Multiple Catch**

- Traps and monitors mice and insects 24 hours a day.
- Always on guard. Always set. Catches multiple mice and insects.

✓ **Low Profile**

- Fits under pallets and in confined spaces.
- Versatile. Fewer restrictions to any application.

✓ **Space Saving Packaging**

- Slim package design utilizes minimal storage and shelf space.
- Quick and convenient to use. Increases profitability.

✓ **No Moving Parts**

- Absolutely nothing to fail.
- Reliable, dependable service.

✓ **Pre-baited Glue Trap**

- Attracts mice and insects. No baiting required.
- No poisons or dangerous chemicals. Safe for user and environment. EPA approved.

✓ **Disposable Glue Trap**

- Simply dispose of trap when full.
- Hands never touch pests. No cleanup needed. Sanitary.

**PRO GRADE  
PERFORMANCE**

*Durable polystyrene construction.  
Easy to clean and user friendly.  
Virtually indestructible.  
Safe and economical.*



**Glue Trap** - Custom fit and pre-baited to attract multiple mice and insects.



**Clear View Lid** - Easy to monitor to reduce inspection time.

**ALSO AVAILABLE FROM KNESS**  
**Stick-All®**  
GLUE TRAP

*The ultimate glue trap for pest control. Attracts, monitors and catches multiple mice and insects.*

*View all our products online at [kness.com/products](http://kness.com/products)*



## THE ULTIMATE GLUE TRAP AND MONITORING SYSTEM

Use the Stick-All® Mouse & Insect Trap for the ultimate in glue trap pest control. The trap attracts, monitors and catches multiple mice and insects. Features include defined and permanent bullet lure holes for beetles, diverting walls to direct mice to glue trap, and insect slot entrances on all four sides. Trapped pests remain out of sight when caught. Used glue trap is easily replaced with a new one. The high-impact polystyrene, reusable protective housing comes with one Stick-All® Glue Trap.

The Stick-All® Glue Trap is a sticky solution to a sticky problem. The trap is pre-baited to attract multiple mice and insects. Once caught, pests stay caught. It's easy, safe and sanitary.





**NARA Lure®** RODENT ATTRACTANT

Common monitoring baits have the critical disadvantage of serving as food for rodents, which increases their life span and risks growing the rodent population. Moreover, most common baits are prone to mold formation in damp areas and are often infested with non-target organisms, such as flour beetles, cockroaches, bristletails and moths.



**BEFORE**

**Common Monitoring Baits:**  
Heavy infestation by non-target organisms after one month.



**AFTER**

**NARA BLOC:**  
No infestation by non-target organisms after one month.



- ☒ **Completely Allergen Free**
  - Only offered by NARA, the monitoring bait specifically for use in food processing plants.
- ☒ **Pure Plastic Bait**
  - Excludes infestation by insects as it is not an organic material.
- ☒ **Unique Design**
  - Makes it highly attractive to rodents with its mushroom-like shape and consistency.
- ☒ **Microbiologically Safe**
  - No mold formation, which other baits form over a short amount of time.
- ☒ **Moisture Resistant**
  - Suitable for damp and dry environments.

# AN INNOVATIVE RODENT ATTRACTANT

NARA Lure® is a high-tech, non-toxic attractant for rodents. It is designed to fit perfectly in our Snap-E® Mousetrap bait cup. Allergen management is a major concern for many food production companies. NARA is the first allergen-free attractant to be designed for this specific purpose.



**NARA Liquid Attractant** - A highly effective lure for rats and mice in dry environments.



**NARA BLOC** - Pure plastic baits that avoid the sanitary problems associated with organic baits.

**ALSO AVAILABLE FROM KNESS**  
**Snap-E®** MOUSETRAP

Snap-E® mousetraps are escape proof and the innovative design ensures you'll never touch another mouse. View all our products online at [kness.com/products](https://kness.com/products)



DESCRIPTION	STOCK #	CARTON SIZE	QUANTITY	WEIGHT
*NARA Lure® 4 Pack of 25	108-0-003	6" x 6" x 3"	4	.84 lbs.
NARA Lure® 12 Pack of 3	108-0-005	8¾" x 4¼" x 4¼"	12	.50 lbs.
*NARA Liquid® 12 Pack of 100	108-0-010	12½" x 9½" x 5"	12	12 lbs.
*NARA Bloc® 4 Pack of 20	118-0-003	10" x 10" x 5¼"	4	3 lbs.

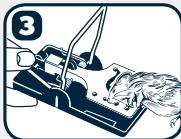
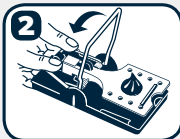
\*Professional Pest Control Sales Only



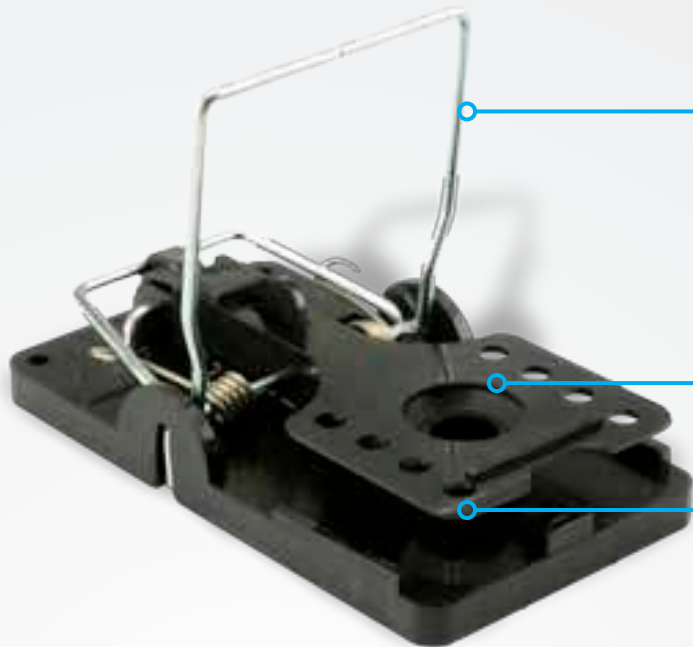


**Big Snap-E®** RAT TRAP : INSTRUCTIONS

Place the baited Snap-E® near a wall and pull back on the upright bar until it locks firmly in the catch. The vertical strike bar is faster than the bar in an old-fashioned wooden trap because it travels just half the distance to catch a rat. The extra-large trip paddle and strike bar catch rodents from the front, sides and back. To clear the trap, simply pull back on the upright bar until rat is released. Your fingers never touch the rodent.



- 1 Simply place bait in pre-formed bait cup.
- 2 Pull back slowly on upright bar until locked firmly in catch. Place trap next to wall near pest activity.
- 3 Pull back slightly on upright bar until rodent is released.



- ✓ **Vertical Strike Bar**
  - Travels just half the distance of old-fashioned wooden traps for a faster response time and a quick, clean catch.
  - Easy to set. Easy to release after use. Your fingers never touch the rodent.
- ✓ **The Big Snap-E® Fits in Most Bait Boxes**
  - Rodent and trap are kept out of sight.
  - Excellent for use in sensitive areas, such as schools and food plants.
- ✓ **Pre-formed Bait Cup**
  - Easy to bait. Confines bait to the trap in all environments.
  - Reduces bait stealing. Attracts rodent to ideal strike bar location.
- ✓ **Extra-Large Trip Paddle**
  - Reduces premature tripping. Ensures catch from front, sides and back.
  - Provides a sure catch.
- ✓ **Polystyrene and Steel Construction**
  - Durable. Easy to clean. Resists stains and odors.
  - Economical and reusable for years of service.

## THE END OF THE ROAD FOR RATS

With the Big Snap-E®, it's the end of the road for rats, gophers, chipmunks, ground squirrels and other pesky rodents. The quick response time makes certain that once caught, the rodent stays caught! Two pre-formed holes in the trap base allow for surface mounting. Your fingers never touch the rodent.

Big Snap-E® traps are made of durable polystyrene and steel. They resist stains and odors common in old-fashioned wooden traps, are easy to clean and can be reused for years of service. **They're safe, simple and sanitary.**

**PRO GRADE  
PERFORMANCE**

Our traps are made of durable polystyrene and steel. They resist stains and odors, are easy to clean and can be reused for years of rodent control. They are simple, safe, sanitary and built to last.

**ALSO AVAILABLE FROM KNESS**  
**Stick-All®**  
RAT GLUE TRAP

It's a sticky solution to a sticky problem. The Stick-All Glue Trap is pre-baited to attract multiple rats, snakes, mice and insects.

View all our products online at [kness.com/products](http://kness.com/products)



DESCRIPTION	STOCK #	CARTON SIZE	QUANTITY	WEIGHT
Big Snap-E® Rat Trap Blistered	103-0-004	10¾" x 12" x 8¼"	12	5 lbs.
Big Snap-E® Rat Trap Blistered	103-0-005	16¼" x 13" x 7"	24	7 lbs.
Big Snap-E® Rat Trap Bulk	103-0-014	16" x 17" x 19½"	180	41 lbs.
*Big Snap-E® Rat Trap Bulk	103-0-013	14½" x 19" x 11¾"	54	14 lbs.
*Big Snap-E® Rat Trap Bulk	103-0-009	19½" x 17" x 16"	105	26 lbs.
*Big Snap-E® Rat Trap Bulk 6x12 each	103-0-012	16½" x 10½" x 18¼"	72	19 lbs.

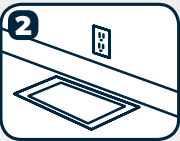
\*Professional Pest Control Sales Only





**Stick-All®** RAT GLUE TRAP : INSTRUCTIONS

The Stick-All® Rat Glue Trap is easy to use. Remove the protective paper and place trap near pest activity. Simply dispose of trap when full.



- 1 Peel off protective release paper, starting from corner.
- 2 Place pre-baited trap GLUE - SIDE UP against wall in areas of rat, mice, snake or insect activity.
- 3 Simply dispose of the used glue trap.



- ✓ **Multiple Catch**
  - Traps and monitors rats, snakes, mice and insects 24 hours a day.
  - Always on guard. Always set. Catches multiple rats, snakes, mice and insects.
- ✓ **No Moving Parts**
  - Absolutely nothing to fail.
  - Reliable, dependable service.
- ✓ **Pre-baited Glue Trap**
  - Attracts rats, snakes, mice and insects. No baiting required.
  - No poisons or dangerous chemicals. Safe for user and the environment. EPA approved.
- ✓ **Multiple-use Glue Trap**
  - Attracts, catches and monitors rats, snakes, mice and insects.
  - Excellent pest control for home, office, warehouse, food plants, hospitals and restaurants.
- ✓ **Disposable Glue Trap**
  - Simply dispose of trap when full.
  - Hands never touch pests. No cleanup needed. Sanitary.
- ✓ **Space Saving Packaging**
  - Slim package design utilizes minimal storage and shelf space.
  - Quick, convenient and economical to use. Increases profitability.

## STICKY SOLUTION TO A STICKY PROBLEM

The Stick-All® Rat Glue Trap is pre-baited to attract multiple rats, snakes, mice and insects. Once caught, pests stay caught. It's easy, safe and sanitary.

No dangerous chemicals are used. The pre-baited glue trap can be placed in the home, office and warehouse. Convenient for the user and safe for the environment.



**ALSO AVAILABLE FROM KNESS**  
**Big Snap-E®**  
RAT TRAP

The Big Snap-E® is truly a better rat trap. Escape proof and you never touch another rat.

View all our products online at [kness.com/products](http://kness.com/products)



DESCRIPTION	STOCK #	CARTON SIZE	QUANTITY	WEIGHT
Stick-All® Rat Glue Trap	106-0-022	9" x 12" x 5"	48 Bulk	9.6 lbs.
Stick-All® Rat Glue Trap	106-0-024	9" x 12" x 5"	2 Pk. x 24	10 lbs.





**Kage-All®** SMALL ANIMAL TRAP : INSTRUCTIONS

Simply lift ring on bayonet latch and open door. Move set rod forward so that it supports the door cross bar member and holds the door open. Place bait at the extreme end of trap opposite the entry door. To release captured animal, place trap door facing away from you. Lift ring on bayonet latch or, to be safe, tie a string on the ring and slowly open trap door.

✓ **Handle with Hand Guard**

- Hand guard provides protection from trapped animal. Handle allows easy transport.
- Safe, simple and convenient design for transporting trapped animals.

✓ **Galvanized Powder-Coated Wire**

- Protects finish. Reduces reflections and light flashes.
- Durable, heavy-duty construction for years of use.

✓ **Protected Bait Area**

- Keeps bait secure from outside access by curious animals.
- Attracts animals to desired location in trap.

✓ **Protected Working Parts**

- Parts located inside trap prevent premature tripping.
- Eliminates need for resetting trap.

✓ **Large Trip Treadle**

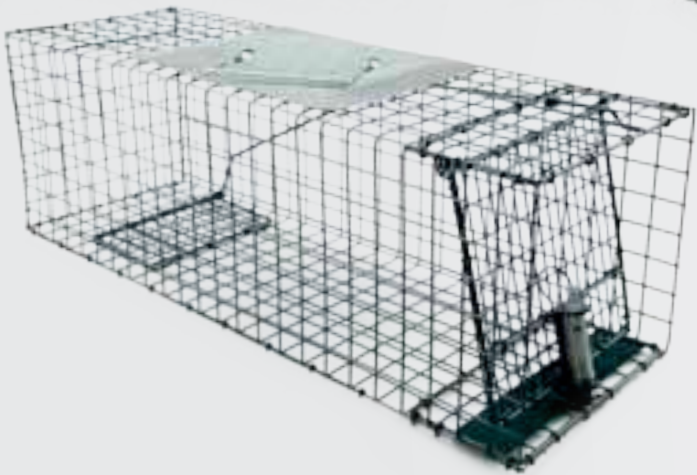
- Located in rear of trap to ensure positive catch.
- Animal cannot back out before door closes.

✓ **Ground Guard**

- Protects the door and latch from grass, sticks, rocks and other debris.
- Trap entry is not obstructed and catch latch is not restricted.

✓ **Bayonet Spring Loaded Door Latch**

- Trap door stays in permanently locked position until operator releases.
- Escape by animal is almost impossible.



## SAFE AND HUMANE WAY TO CATCH AND HOLD ANIMALS

Kage-All® Small Animal Traps are custom designed to trap live animals such as chipmunks, rats, weasels, squirrels, skunks, muskrats, rabbits, cats, raccoons opossums, porcupines, woodchucks, armadillos, foxes and groundhogs.

Kage-All® traps are made of galvanized wire, powder-coated, rust-resistant steel and heavy-gauge construction for years of use. The discreet forest green color reduces reflections and light flashes while blending into the environment.

**PRO GRADE PERFORMANCE**

Kage-All® traps are made of galvanized wire, powder-coated steel and heavy-gauge construction. The Kage-All® is built to last for years of use. Durable and safe, it's the humane way to trap live animals. Nothing catches and holds critters better than Kage-All®.

COMING SOON FROM KNESS  
**Flies-No-More®**  
SOLAR TRAP

Flies-No-More® Solar Traps are custom designed to trap house flies, barn flies and other flying insect pests.

View all our products online at [kness.com/products](http://kness.com/products)



DESCRIPTION	STOCK #	CARTON SIZE	QUANTITY	WEIGHT
Chipmunk Trap	150-0-006	19" x 6½" x 6"	1	3 lbs.
Squirrel Trap	151-0-006	25¼" x 9" x 9¼"	1	6 lbs.
Raccoon Trap	152-0-006	36" x 12" x 12"	1	14 lbs.
Kage-All® Showcase Contains 1 Each 150-0-006, 151-0-006, 152-0-006	157-0-006	38" x 15" x 15" INNER PACK	3	22 lbs.



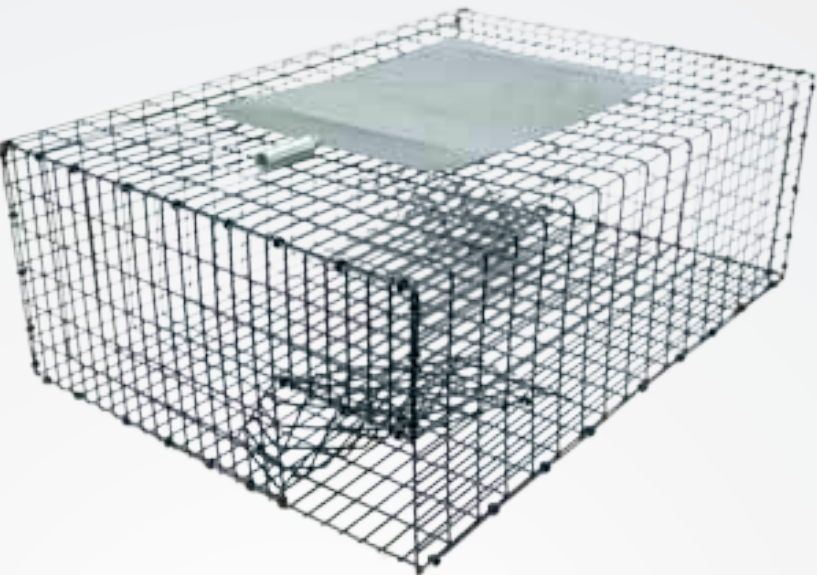


**Kage-All®** BIRD TRAP : INSTRUCTIONS

Use a sufficient amount of bait and place inside the trap. A pan of water in the trap is also recommended. Bird feed placed inside the trap lures pest birds in and the walk-through design allows birds to easily walk in, but not out.

☒ **Handle with Hand Guard**

- Hand guard provides protection from trapped bird. Handle allows easy transport.
- Safe, simple and convenient design for transporting trapped animals.



☒ **Galvanized Powder Coated Wire**

- Protects finish. Reduces reflections and light flashes.
- Durable, heavy-duty construction for years of use.

☒ **Protected Bait Area**

- Keeps bait secure from outside access by curious animals.
- Attracts birds to trap.

☒ **Funnel Entrance**

- Traps birds and prevents escape.
- Prevents injury of birds.

☒ **Easy-access Removal Door**

- Birds can be easily released unharmed.

☒ **Use Traps Where Other Methods May Not Be Appropriate**

- No poisons or toxic baits.
- Repeating trap catches multiple birds in each setting.

☒ **Traps Can Be Used Anywhere, Inside and Outside**

- Comes fully assembled.
- Simple and easy to use.



## SAFE AND HUMANE WAY TO CATCH AND HOLD BIRDS

Kage-All® Bird Traps humanely capture pest birds such as sparrows and pigeons for later release or relocation without causing harm to the bird. Kage-All® Bird Traps are simple and easy to use and can be used indoors or outdoors.

Kage-All® traps are made of galvanized wire, powder-coated, rust-resistant steel and heavy-gauge construction for years of use. The discreet forest green color reduces reflections and light flashes while blending into the environment.

**PRO GRADE PERFORMANCE**

*Kage-All® traps are made of galvanized wire, powder-coated steel and heavy-gauge construction. The Kage-All® is built to last for years of use. Durable and safe, it's the humane way to trap live animals. Nothing catches and holds critters better than Kage-All®.*

**ALSO AVAILABLE FROM KNESS**  
**Pro-Ketch Junior®**  
MOUSETRAP

*Always properly set, giving you the peace of mind of knowing that you always have protection.*

*View all our products online at [kness.com/products](https://kness.com/products)*



DESCRIPTION	STOCK #	CARTON SIZE	QUANTITY	WEIGHT
Pigeon Trap	160-0-006	37" x 19" x 9"	1	9 lbs.
Sparrow Trap	161-0-006	18" x 13" x 7"	1	4 lbs.





**Ants-No-More®** ANT BAIT STATION : INSTRUCTIONS

Line up arrow on tamper-resistant lid. Push lid up and back with your thumb.  
Place your choice of ant bait in either or both compartments. Replace lid.

Stick Ants-No-More® in the ground anywhere foraging ants are a problem. Ants will carry bait back to the nest - eliminating the entire colony.



✓ **Informative Trap Lid**

- Identifies target pest and product.
- Eliminates misuse.

✓ **Multiple Entry Holes**

- Increases ant movement in and out of trap.
- Quicker elimination of ant colony.

✓ **Color**

- Inconspicuously blends into environment.

✓ **Stake Design**

- Easy placement saves time.

✓ **Two Bait Compartments**

- Accommodates all types of baits.
- User's choice of gel, granular or liquid bait.
- 3oz. total capacity

✓ **Interior Sliding Bait Stop**

- Reduces bait spillage.
- Provides safety and reduces bait cost.

✓ **Tamper-resistant Lid**

- Prevents accidental opening.
- Safe to use around children and pets.

✓ **Waterproof**

- Can be used in wet environments such as near indoor and outdoor sprinkler systems.
- Baits last longer.

✓ **UV Protection**

- Protects bait attractant from UV rays so bait remains effective longer.

**Suggested Area for Placement -**

- Any area where foraging ants are active.
- Cracks in foundation.
- Areas below bath and kitchen windows.
- Air conditioning entry points.
- Wood piles.

**PRO GRADE  
PERFORMANCE**

Rugged one-piece green polypropylene construction. Highly tamperproof, waterproof, and due to its design the bait will not spill out of the entry points.

**ALSO AVAILABLE FROM KNESS**  
**Stick-All®**  
MOUSE & INSECT TRAP

The ultimate glue trap for pest control. Attracts, monitors and catches multiple mice and insects.

View all our products online at [kness.com/products](http://kness.com/products)



DESCRIPTION	STOCK #	CARTON SIZE	QUANTITY	WEIGHT
Ants-No-More® 6 x 2 Pack	107-0-012	9 1/8" x 7" x 9 7/8"	12	3 lbs.
Ants-No-More® 36 x 2 Pack	107-0-013	21 3/8" x 19" x 10 3/4"	72	17 lbs.
Ants-No-More® 12 Bulk	107-0-002	9 3/4" x 8 1/4" x 8 3/4"	12	3 lbs.
*Ants-No-More® 60 Bulk	107-0-015	16 1/2" x 10 1/2" x 15"	60	9 lbs.
*Ants-No-More® 175 Bulk	107-0-006	24" x 16 1/2" x 17 3/4"	175	50 lbs.
*Ants-No-More® Replacement Cup	107-0-014	5 3/4" x 3 1/2" x 2 3/8"	48	1 lbs.

\*Professional Pest Control Sales Only

## EFFECTIVELY ELIMINATES ANT COLONIES

The Ants-No-More® Ant Bait Station is placed outdoors by simply sticking it in the ground, or indoors by inserting it into the soil of a planter. Place wherever foraging ants are causing problems - around homes, buildings, near shrubs, trees, flower beds or planter boxes. Foraging ants enter the Ant Bait Station, take the bait from one of two compartments and carry it back to the nest. The Ant Bait Station eliminates the heart of the problem - the colony.





## Flies-No-More® SOLAR TRAP : INSTRUCTIONS

To remove the cover, firmly hold the base and pull the cover toward the 'Open' tab located on one end of the base. With the cover removed, pull the paper backing off of the enclosed glue board. With the glue board exposed, firmly hold the base and slide the cover onto the base toward the 'Close' tab located on one end of the base.

The Flies-No-More® Solar Trap is now ready for use and can be placed anywhere you notice fly activity.

Coming Soon  
**OUR NEWEST  
PRODUCT**



### ✓ **Solar Powered LED light**

- Specific colors are used for luring and capturing house flies, cluster flies, barn flies and other flying insect pests.
- Solar panel to recharge internal battery.

### ✓ **One Banana-scented Glue Board**

- Made specifically to attract flies and other flying insects.
- Glue board in combination with LED lights provide for a quick catch rate.

### ✓ **High-quality Construction**

- Designed for many years of use.
- The molded plastic construction is both durable and visually appealing.

### ✓ **Pre-formed Openings on the Base**

- Vertical or horizontal easy wall installation.

### ✓ **Eco-friendly Design**

- Allows for easy inspection and replacement of glue board.
- Front of trap allows for larger trapping area.

### ✓ **Versatile Design**

- Allows for placement in a variety of areas.
- Inspection is easy and convenient, as most of the captured insects are hidden from plain sight. Inspection of glue board does not require removing any shields or parts.

### ✓ **Simple to Use On/Off Switch**

**PRO GRADE  
PERFORMANCE**

Made of polypropylene, resistant to stains and odors. Flies-No-More® Solar Traps are easy to clean and can be reused. Glue board can be disposed of after pests are caught.

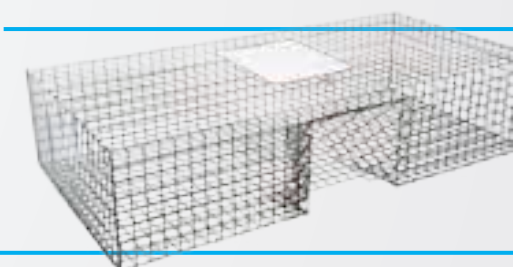
Each trap comes with glue board for retail and pest control professionals.



ALSO AVAILABLE FROM KNESS  
**Kage-All®**  
LIVE ANIMAL TRAPS

Kage-All® Live Animal Traps are custom designed to trap everything from sparrows to raccoons.

View all our products online at  
[kness.com/products](http://kness.com/products)



## THE WORLD'S BEST SOLAR POWERED FLY TRAP

Flies-No-More® Solar Traps are custom designed to trap house flies, cluster flies, barn flies and other flying insect pests.

Innovative features include LED light attractant; banana-scented glue board designed to attract flies and other insects; visually appealing durable molded plastic construction; easy inspection and easy replacement of glue board; large trapping area.

