

kness Pest Defense

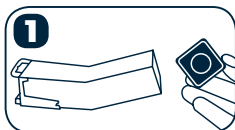
Tip-Trap® LIVE CAPTURE MOUSETRAP

THE SIMPLE DO-IT-YOURSELF MOUSETRAP

LA SIMPLE TRAMPA PARA RATONES QUE USTED MISMO PUEDE PREPARAR
UN PIÈGE À SOURIS SIMPLE À FAIRE SOI-MÊME

Easy to Bait and Set!

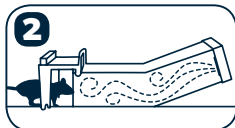
Se prepara y se le coloca el cebo facilmente
Facile à appâter et à installer!



1 Remove end cap and place peanut butter in bait cup (peanut butter not included). Replace end cap.

Quite la tapa del extremo y ponga mantequilla de cacahuete en la cavidad para el cebo (no se incluye la mantequilla de cacahuete). Vuelva a colocar al tapa.

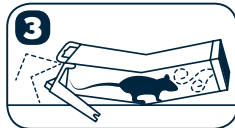
Retirez le capuchon d'extrémité et placez le beurre d'arachide dans la tasse qui sert d'appât (beurre d'arachide non inclus). Remplacez le capuchon d'extrémité.



2 Place trap in problem area, preferably near a wall. The trap should be placed perpendicular to the wall with trap door in open position.

Coloque la trampa en el area del problema, de preferencia cerca de una pared. La trampa debe colocarse perpendicular a la pared y con la puerta de la trampa en la posición abierta.

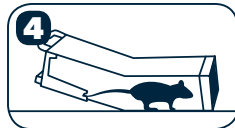
Placez le piège dans l'endroit problématique, de préférence près d'un mur. Le piège doit être placé perpendiculairement au mur avec la porte de la trappe en position ouverte.



3 Bait will attract mice.

El cebo atraerá ratones.

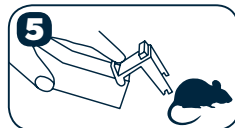
L'appât attirera les souris.



4 As the mouse moves inside, the trap tips up automatically, closing the trap door.

Al entrar el ratón, la trampa se inclina automáticamente y la puerta se cierra.

Lorsque la souris entre à l'intérieur, le piège se soulève automatiquement, ce qui ferme la porte de la trappe.



5 To empty trap, hold trap as shown and lift door with index finger.

Para vaciar la trampa, sujétela como se muestra en la ilustración y levante la puerta con el dedo índice.

Pour vider le piège, tenez-le comme indiqué et soulevez la porte avec l'index.

RETURN THIS CARD FOR FREE INFORMATION

Name: _____

Address: _____

City: _____ State: _____ Zip: _____

Phone Number: _____

THE RIGHT TRAP FOR YOU:

Please send literature on the following products:



Ketch-All[®] MULTIPLE CATCH MOUSETRAP

The original Ketch-All[®] multiple catch mousetrap requires no baits, no poison, and is environmentally safe and sanitary.



Ketch-All[®] DROWNING ATTACHMENT

Provides an easy way to dispose of mice, helps keep the Ketch-All[®] clean and eliminates odors.



Pro-Ketch[®] MULTIPLE CATCH MOUSETRAP

The Pro-Ketch[®] multiple catch mousetrap features two no-escape entries, low profile design and easy clean out.



Snap-E[®] MOUSETRAP

The Snap-E[®] mousetrap is easy to bait, easy to set, easy to release and sanitary.



Big Snap-E[®] RAT TRAP

The Big Snap-E[®] single catch rat trap is made of durable polystyrene and steel to make this trap virtually indestructible.



Stick-All[®] MOUSE & INSECT TRAP

The Stick-All[®] is a multi-purpose trap for catching mice and crawling insects.



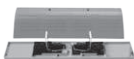
Stick-All[®] GLUE TRAP

The Stick-All[®] Glue Trap attracts mice and insects. No dangerous chemicals or poisons and is environmentally safe.



Ants-No-More[®] ANT BAIT STATION

The Ants-No-More[®] Bait Station features twin bait compartments, moisture resistant design with tamper-proof lid.



Snap-E[®] COVER

The Snap-E[®] Cover keeps traps and catch out of sight, keeping children and pets away from rodents and traps.



Kage-All[®] LIVE CAGE TRAPS

The Kage-All[®] professional cage traps humanely catch and transport small to medium-sized animals, as well as birds.



kness Pest Defense
Your best defense:

A quality product of **Kness Mfg. Co., Inc.** · PO Box 70 · Albia, IA 52531

☎ 800 247 5062

✉ info@kness.com

🌐 kness.com